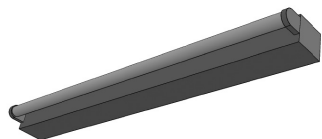


SM1 - SIDE MOUNT 1 LAMP

Project		
Catalog #		
Volts		Lamp(s)
Ballast Type		
Type		Date
Approved by		



General

Surface mount shallow profile standard fixture with sockets at a right angle.

Ideal for functional applications requiring ample lighting in tight spaces such as under-cabinet, display cabinets, and valance lighting.

Suitable for surface and continuous row mounting.

Electrical

Available in electronic ballasts only.

Available voltages: 120V/277V/347V and UNV.

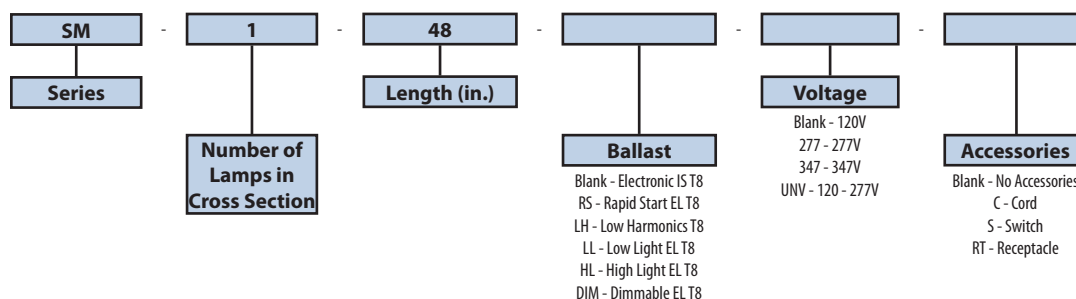
Approval

CSA and UL certified.

Housing & Finishing

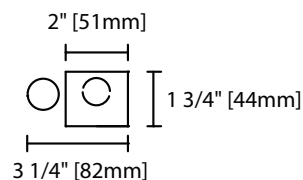
Die-formed cold rolled steel finished in pre-painted high-gloss white. The body and the ends are riveted, increasing strength and rigidity.

Ordering Information

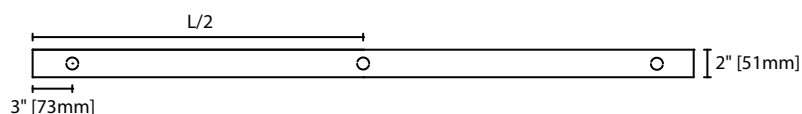


Product Availability

Item	Dimensions (L x W x D)	Lamps/ Cross Section	Lamps/ Fixture	Lamp Watt T8
SM 115	15" x 2" x 1 3/4"	1	1	14
SM 118	18" x 2" x 1 3/4"	1	1	15
SM 124	24" x 2" x 1 3/4"	1	1	17
SM 136	36" x 2" x 1 3/4"	1	1	25
SM 148	48" x 2" x 1 3/4"	1	1	32
SM 160	60" x 2" x 1 3/4"	1	1	40
SM 172T	72" x 2" x 1 3/4"	1	2	25
SM 196T	96" x 2" x 1 3/4"	1	2	32



SM1 Cross Section View



SM1 Base View