

SM2 - SIDE MOUNT 2 LAMP

General

Surface mount shallow profile standard fixture with sockets at a right angle.

Ideal for functional applications requiring ample lighting in tight spaces such as under-cabinet, display cabinets, and valance lighting.

Suitable for surface and continuous row mounting.

Electrical

Available in electronic ballasts only.

Available voltages: 120V/277V/347V and UNV.

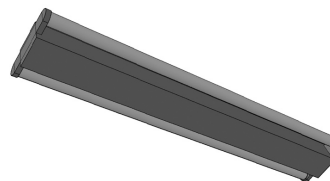
Approval

CSA and UL certified.

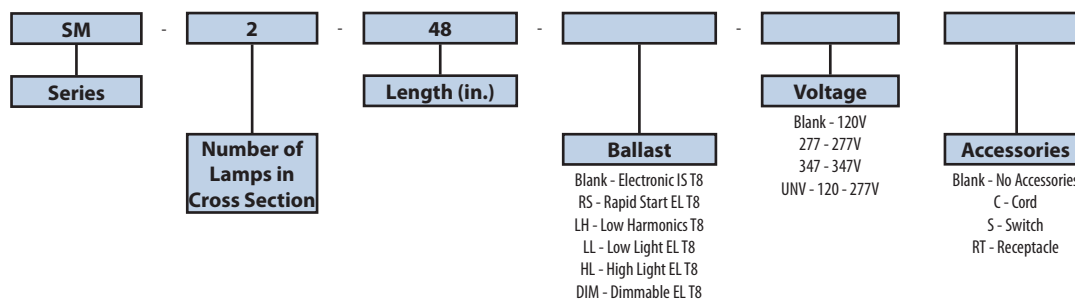
Project	
Catalog #	
Volts	Lamp(s)
Ballast Type	
Type	Date
Approved by	

Housing & Finishing

Die-formed cold rolled steel finished in pre-painted high-gloss white. The body and the ends are riveted, increasing strength and rigidity.

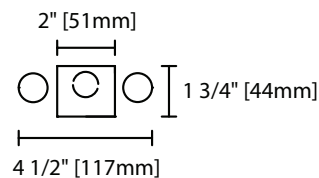


Ordering Information

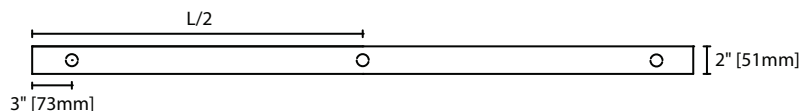


Product Availability

Item	Dimensions (L x W x D)	Lamps/ Cross Section	Lamps/ Fixture	Lamp Watt T8
SM 215	15" x 2" x 1 3/4"	2	2	14
SM 218	18" x 2" x 1 3/4"	2	2	15
SM 224	24" x 2" x 1 3/4"	2	2	17
SM 236	36" x 2" x 1 3/4"	2	2	25
SM 248	48" x 2" x 1 3/4"	2	2	32
SM 260	60" x 2" x 1 3/4"	2	2	40



SM2 Cross Section View



SM2 Base View