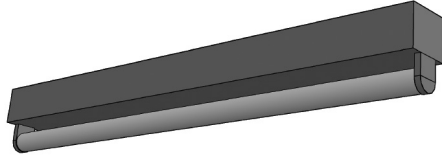


ST1 - STRIP 1 LAMP

Project			
Catalog #			
Volts		Lamp(s)	
Ballast Type			
Type		Date	
Approved by			



General

Surface mount commercial fixture for functional applications of general lighting.

Suitable for surface, pendant, and continuous row mounting.

Housing & Finishing

Die-formed cold rolled steel finished in pre-painted high-gloss white. The body and the ends are riveted, increasing strength and rigidity.

Optional wire guard protects the fixtures from impact and breakage.

Electrical

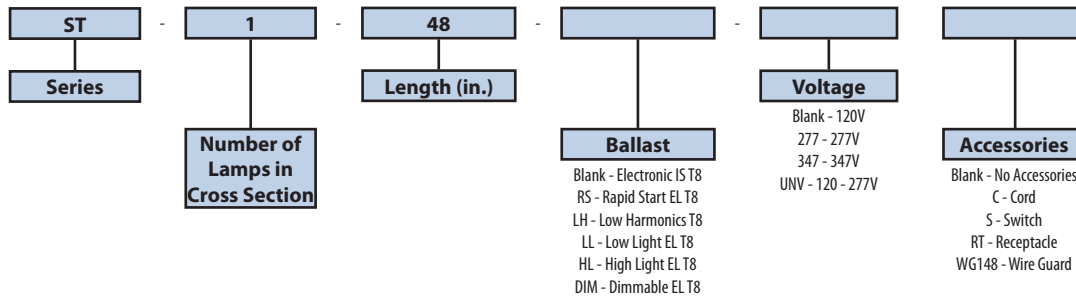
Available in electronic ballasts only.

Available voltages: 120V/277V/347V and UNV.

Approval

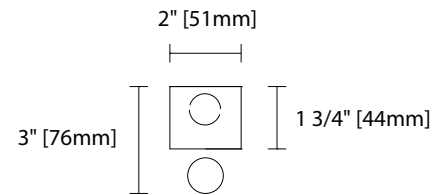
CSA and UL certified.

Ordering Information

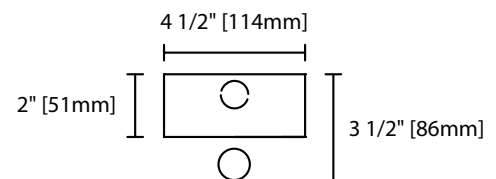


Product Availability

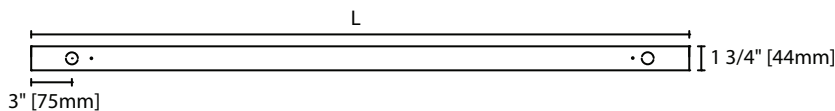
Item	Dimensions (L x W x D)	Lamps/ Cross Section	Lamps/ Fixture	Lamp Watt T8
ST 115	15" x 2" x 1 3/4"	1	1	14
ST 118	18" x 2" x 1 3/4"	1	1	15
ST 124	24" x 2" x 1 3/4"	1	1	17
ST 136	36" x 2" x 1 3/4"	1	1	25
ST 148	48" x 2" x 1 3/4"	1	1	32
ST 160	60" x 2" x 1 3/4"	1	1	40
ST 172T	72" x 2" x 1 3/4"	1	2	25
ST 196T	96" x 2" x 1 3/4"	1	2	32
ST 196TW	96" x 4 1/2" x 2"	1	2	32



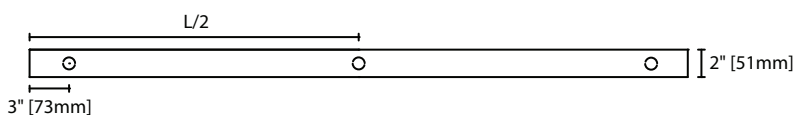
ST1 Cross Section View



ST196TW Cross Section View



ST1 Side View



ST1 Base View