

ST1 SG - STRIP STAGGERED 1 LAMP

General

Staggered low profile strip for applications requiring elimination of shadow effects caused by sockets in continuous row mountings.

Ideal for cove and under-cabinet lighting.

Housing & Finishing

A low profile body made of die-formed cold rolled steel finished in pre-painted high-gloss white.

Electrical

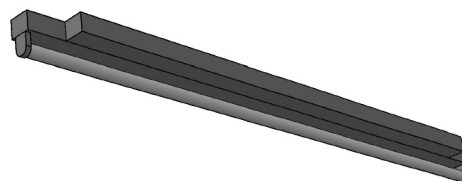
Available in electronic ballasts only.

Available voltages: 120V/277V/347V and UNV.

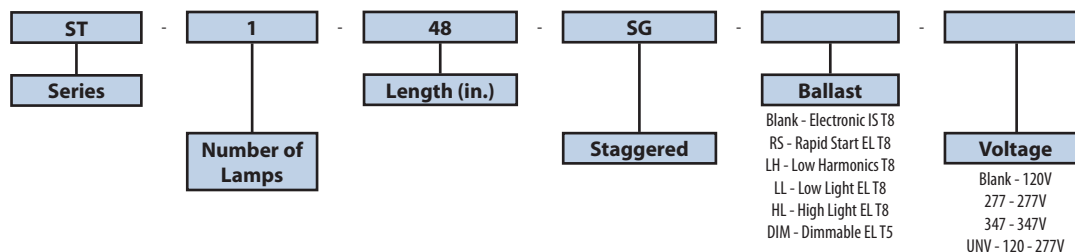
Approval

CSA and UL certified.

Project	
Catalog #	
Volts	Lamp(s)
Ballast Type	
Type	Date
Approved by	

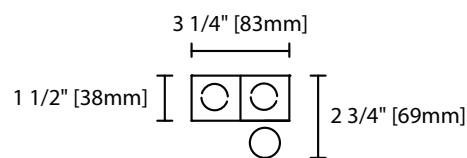


Ordering Information

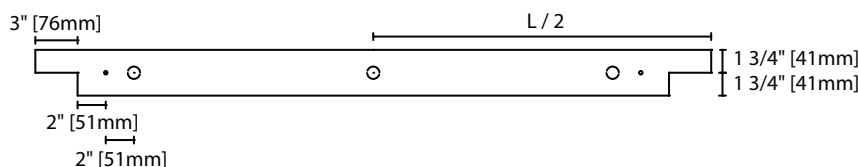


Product Availability

Item	Dimensions (L x W x D)	Lamps/ Cross Section	Lamps/ Fixture	Lamp Watt T8
ST 124-SG	24" x 3 1/4" x 1 1/2"	1	1	17
ST 136-SG	36" x 3 1/4" x 1 1/2"	1	1	25
ST 148-SG	48" x 3 1/4" x 1 1/2"	1	1	32
ST 136/2-SG	69" x 3 1/4" x 1 1/2"	1	2	25
ST 148/2-SG	93" x 3 1/4" x 1 1/2"	1	2	32



ST1-SG Cross Section View



ST1-SG Side View