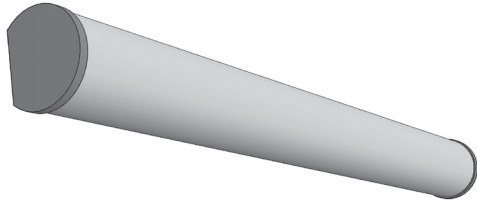


# VB - VANITY BRACKET

<b>Project</b>			
<b>Catalog #</b>			
<b>Volts</b>		<b>Lamp(s)</b>	
<b>Ballast Type</b>			
<b>Type</b>		<b>Date</b>	
<b>Approved by</b>			



### General

Surface wall mount decorative enclosure for strip fixtures. Provides ample lighting with smooth appearance.

Ideal for vanities in hospitality, condos, and other upscale applications.

### Lens

Lens is held to the body by two springs. White fluted opal acrylic.

Optional smooth lens available on request.

### Electrical

Available only in electronic ballasts.

Available voltages: 120V/277V/347V and UNV voltage.

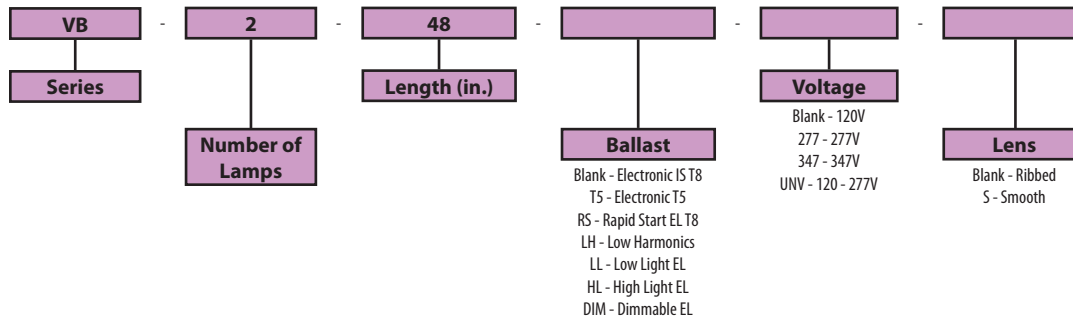
### Housing & Finishing

Die-formed cold rolled steel finished in pre-painted high-gloss white.

### Approval

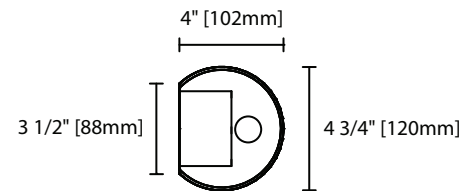
CSA certified.

## Ordering Information

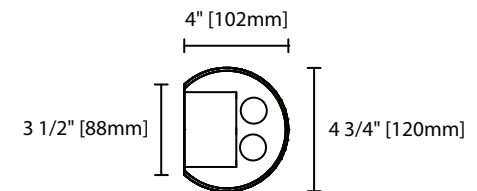


## Product Availability

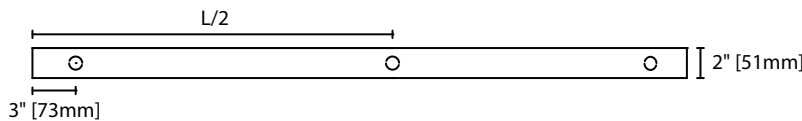
Item	Dimensions (L x W x D)	Lamps/ Cross Section	Lamps/ Fixture	Lamp Watt T8	Lamp Watt T5
VB 124	25 1/2" x 4 3/4" x 4"	1	1	17	14
VB 224	25 1/2" x 4 3/4" x 4"	2	2	17	14
VB 136	37 1/2" x 4 3/4" x 4"	1	1	25	21
VB 236	37 1/2" x 4 3/4" x 4"	2	2	25	21
VB 148	49 1/2" x 4 3/4" x 4"	1	1	32	28
VB 248	49 1/2" x 4 3/4" x 4"	2	2	32	28



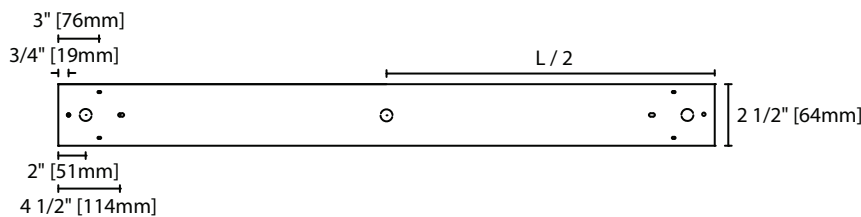
VB 1 Lamp Cross Section View



VB 2 Lamps Cross Section View



VB1 Base View



VB2 Base View