

HBD2-4 - HIGH BAY 2-4 LAMPS

General

Highly efficient fixture using the latest T5HO or T8HL fluorescent technology to replace inefficient HID high bay or low bay fixtures, using half the energy.

Ideal for retail, commercial, or industrial applications.

Suitable for surface, suspension, continuous row mount.

Features

The HBD offers: efficient lumen per watt, high lumen maintenance throughout its entire life, better colour rendering, and instant on/off/re-strike after power interruption.

Comes with adjustable aircraft cable hanger kit.

Housing & Reflectors

Die-formed cold rolled steel in pre-painted high-gloss white with wiring access plate.

Standard specular reflector is made of high-gloss specular metal with 95% reflective value.

Optional prismatic or clear lens for an even distribution of light.

Optional wire guard protects lamps.

Electrical

Standard easy access wiring plate.

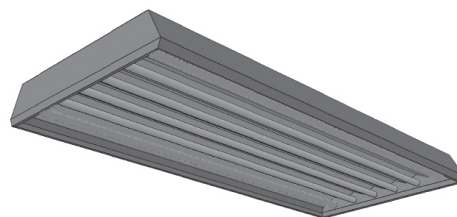
Available in electronic ballasts only.

Available voltages: 120V/277V/347V and UNV.

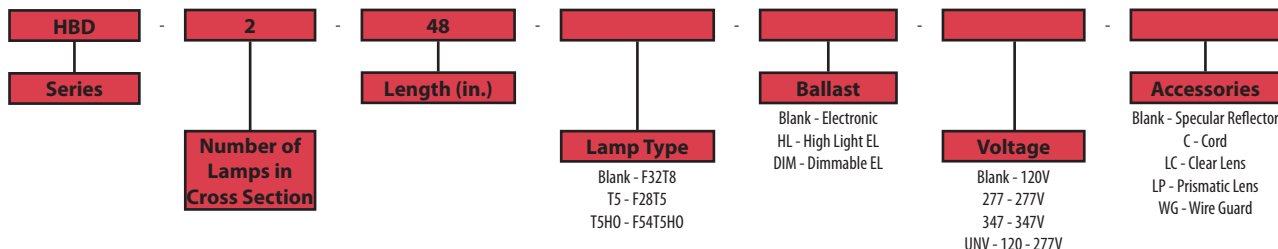
Approval

CSA certified.

Project	
Catalog #	
Volts	Lamp(s)
Ballast Type	
Type	Date
Approved by	

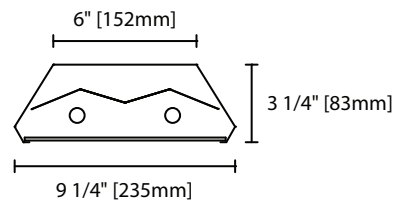


Ordering Information

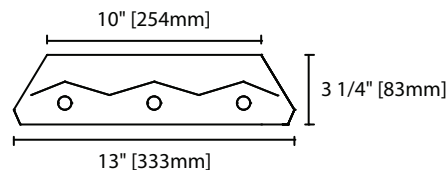


Product Availability

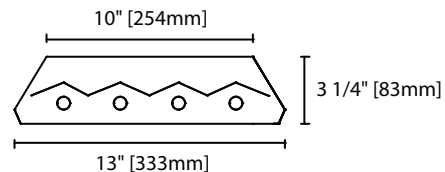
Item	Dimensions (L x W x D)	Lamps/ Cross Section	Lamps/ Fixture	Lamp Watt		
				T8	T5	T5HO
HBD 248	48" x 9 1/4" x 3 1/4"	2	2	32	28	54
HBD 348	48" x 13" x 3 1/4"	3	3	32	28	54
HBD 448	48" x 13" x 3 1/4"	4	4	32	28	54
HBD 296T	96" x 9 1/4" x 3 1/4"	2	4	32	28	54
HBD 396T	96" x 13" x 3 1/4"	3	6	32	28	54
HBD 496T	96" x 13" x 3 1/4"	4	8	32	28	54



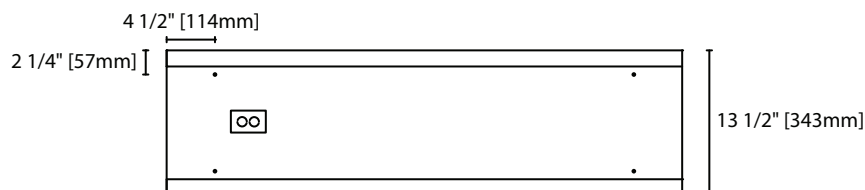
HBD 2 Lamps Cross Section View



HBD 3 Lamps Cross Section View



HBD 4 Lamps Cross Section View



HBD 2/3/4 Base View

