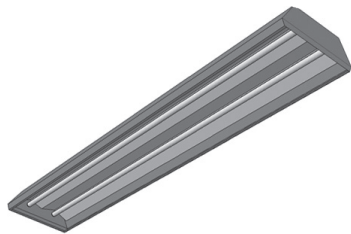


HBE - HIGH BAY ELEGANT

Project			
Catalog #			
Volts		Lamp(s)	
Ballast Type			
Type		Date	
Approved by			



General

Highly efficient fixture using T8HL or T5HO fluorescent technology to replace inefficient HID or T12 fluorescent fixtures.

Suitable for surface, suspension, continuous row mount.

Features

The HBE offers: efficient lumen per watt, high lumen maintenance throughout its entire life, better colour rendering, and instant on/off/re-strike after power interruption.

Standard High-Lumen ballasts and a choice of specular reflectors provide superior wide lighting distribution and efficiency.

Housing & Reflectors

Die-formed cold rolled steel in pre-painted high-gloss white with wiring access plate.

Standard specular reflector is made of high-gloss specular metal with 95% reflective value

Optional clear or prismatic lens for an even distribution of light.

Optional wire guard protects fixtures from breakage.

Electrical

Standard easy access wiring plate .

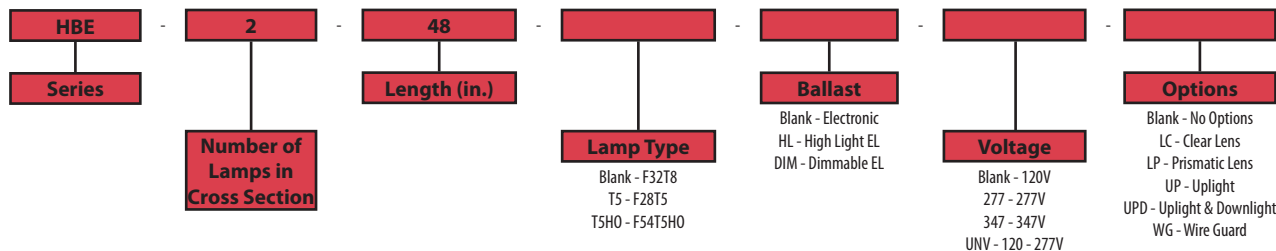
Available in electronic ballasts only.

Available voltages: 120V/277V/347V and UNV.

Approval

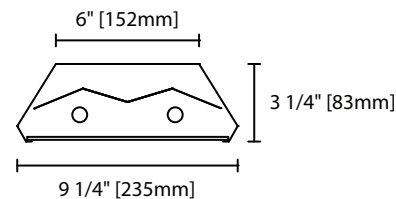
CSA certified.

Ordering Information

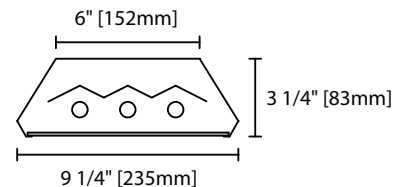


Product Availability

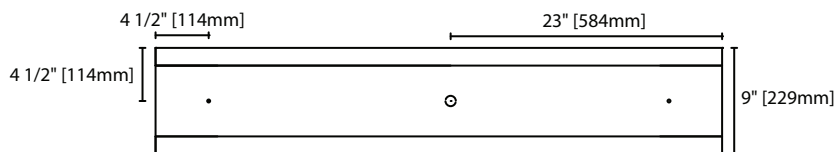
Item	Dimensions (L x W x D)	Lamps/ Cross Section	Lamps/ Fixture	Lamp Watt		
				T8	T5	T5HO
HBE 248	48" x 9 1/4" x 3 1/4"	2	2	32	28	54
HBE 348	48" x 9 1/4" x 3 1/4"	3	3	32	28	54
HBE 296T	96" x 9 1/4" x 3 1/4"	2	4	32	28	54



HBE 2 Lamps Cross Section View



HBE 3 Lamps Cross Section View



HBE Base View