

HBL - HIGH BAY LINEAR

General

Highly efficient fixture using T8HL or T5HO fluorescent technology to replace inefficient track or fluorescent fixtures.

Suitable for surface, suspension, and continuous row mount.

Features

The HBL offers: efficient lumen per watt, high lumen maintenance throughout its entire life, better colour rendering, and instant on/off/re-strike after power interruption.

Standard High-Lumen ballasts and a choice of specular reflectors provide superior wide lighting distribution and efficiency.

Housing & Reflectors

Die-formed cold rolled steel in pre-painted high-gloss white with wiring access plate.

Standard specular reflector is made of high-gloss specular metal with 95% reflective value.

Optional clear or prismatic lens shields lamps.

Optional radial louver adds esthetics and reduces glare.

Electrical

Standard easy access wiring plate.

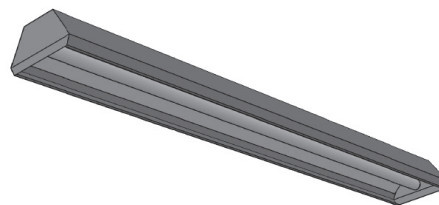
Available in electronic ballasts only.

Available voltages: 120V/277V/347V and UNV.

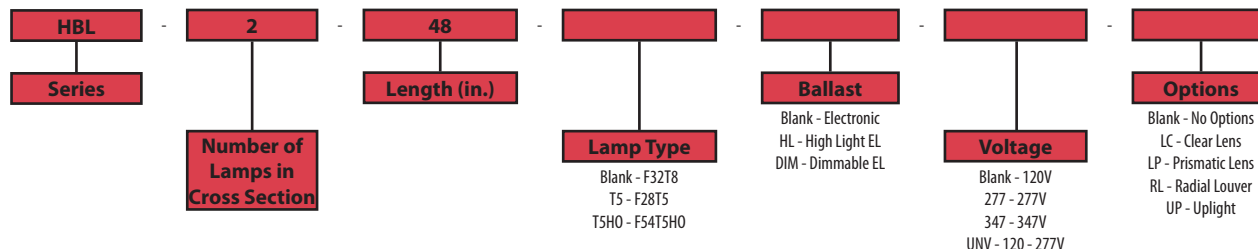
Approval

CSA certified.

Project	
Catalog #	
Volts	Lamp(s)
Ballast Type	
Type	Date
Approved by	

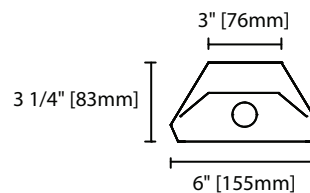


Ordering Information

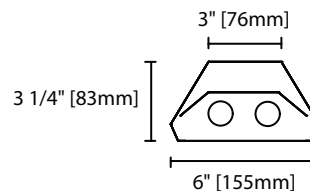


Product Availability

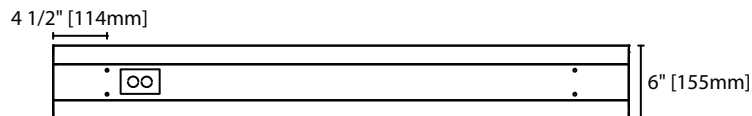
Item	Dimensions (L x W x D)	Lamps/ Cross Section	Lamps/ Fixture	Lamp Watt		
				T8	T5	T5HO
HBL 148	48" x 6" x 3 1/4"	1	1	32	28	54
HBL 248	48" x 6" x 3 1/4"	2	2	32	28	54
HBL 196T	96" x 6" x 3 1/4"	1	2	32	28	54
HBL 296T	96" x 6" x 3 1/4"	2	4	32	28	54



HBL 1 Lamp Cross Section View



HBL 2 Lamps Cross Section View



HBL Base View