

SL R - INDUSTRIAL SLIM LINE

General

Surface mount commercial fixture for applications requiring ample lighting. Ideal for commercial uses in stores, warehouses, and workshops.

Suitable for surface, pendant and continuous row mounting.

Housing & Finishing

Die-formed cold rolled steel finished in pre-painted high-gloss white. Shallow body due to new electronic ballasts.

Options

Asymmetrical reflectors.

Specular reflectors of high-gloss polished metal.

Slotted reflectors provide 10% up-light.

Wire guards protect the fixtures from impact and breakage.

Electrical

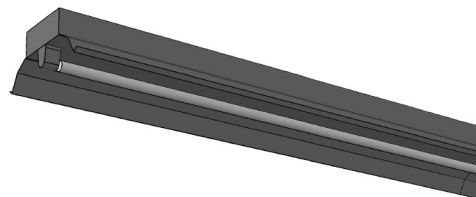
Available only in electronic ballasts.

Available voltages: 120V/277V/347V and UNV.

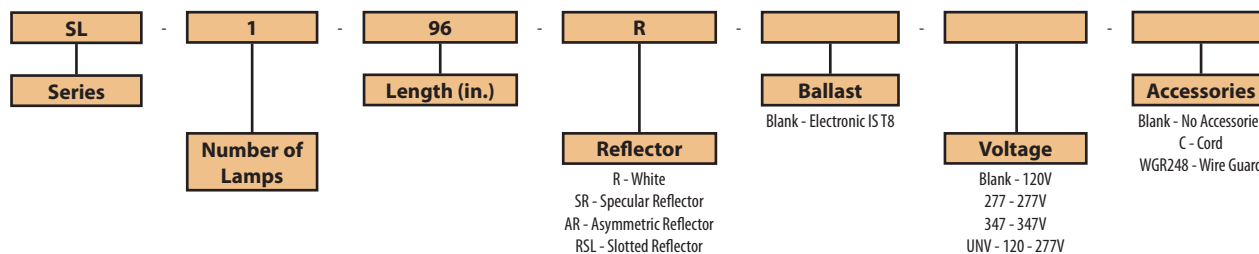
Approval

CSA and UL certified.

Project	
Catalog #	
Volts	Lamp(s)
Ballast Type	
Type	Date
Approved by	

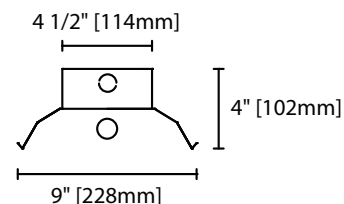


Ordering Information

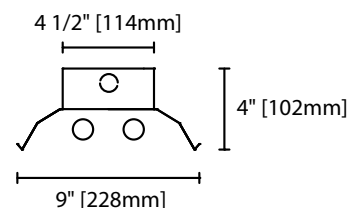


Product Availability

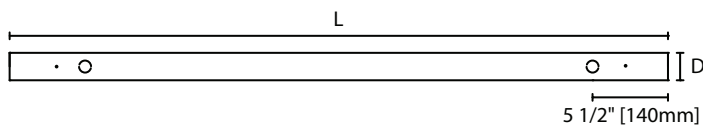
Item	Dimensions (L x W x D)	Lamps/ Cross Section	Lamps/ Fixture	Lamp Watt T8
SL 196-R	48" x 9" x 4"	1	1	59
SL 296-R	96" x 9" x 4"	2	2	59



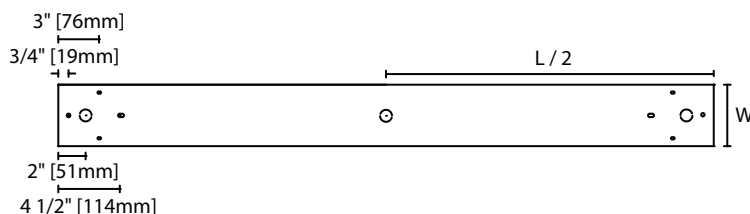
SL1 R Cross Section View



SL2 R Cross Section View



SL R Side View



SL R Base View