

ST1 R - INDUSTRIAL STRIP 1 LAMP

Project			
Catalog #			
Volts		Lamp(s)	
Ballast Type			
Type		Date	
Approved by			

General
Industrial strip fixtures ideal for general lighting in garages, workshops and many other commercial applications.

Suitable for surface, pendant and continuous row mounting.

Housing & Finishing
Die-formed cold rolled steel finished in pre-painted high-gloss white. Shallow body due to new electronic ballasts.

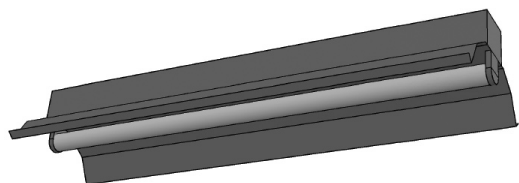
Options
Asymmetrical reflectors.
Specular reflectors of high-gloss polished metal.

Slotted reflectors provide 10% up-light.

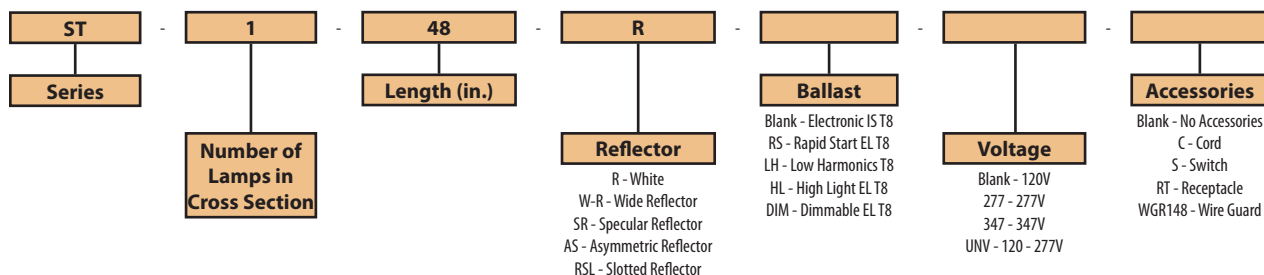
Wire guards protect the fixtures from impact and breakage.

Electrical
Available only in electronic ballasts.
Available voltages: 120V/277V/347V and UNV.

Approval
CSA and UL certified.

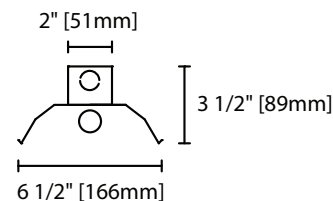


Ordering Information

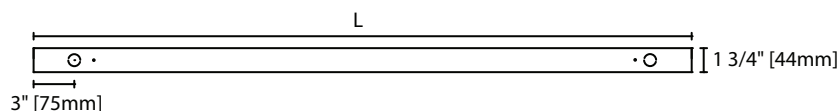


Product Availability

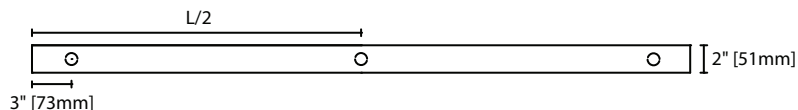
Item	Dimensions (L x W x D)	Lamps/ Cross Section	Lamps/ Fixture	Lamp Watt T8
ST 148-R	48" x 6 1/2" x 3 1/2"	1	1	32
ST 196T-R	96" x 6 1/2" x 3 1/2"	1	2	32
ST 196T-W-R	96" x 9" x 4"	1	2	32



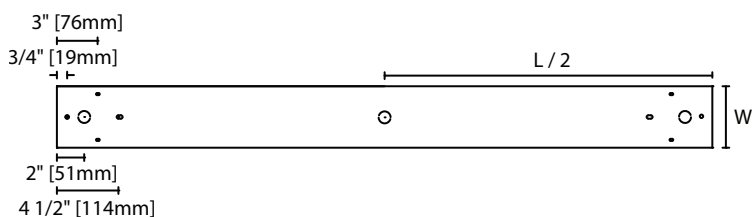
ST1 R Cross Section View



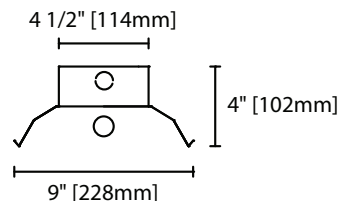
ST1 R Side View



ST1 R Base View



ST1-W-R Base View



ST1-W-R Cross Section View

