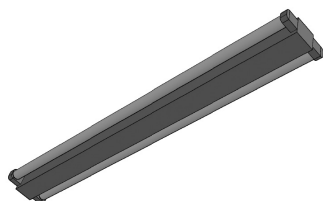


SM2 T5 - SIDE MOUNT 2 LAMPS T5

Project		
Catalog #		
Volts		Lamp(s)
Ballast Type		
Type		Date
Approved by		



General

Surface mount shallow profile commercial fixture with sockets at a right angle. It utilizes the latest T5 fluorescent technology.

Ideal for functional applications requiring ample lighting in tight spaces such as under-cabinet, display cabinets, and valance lighting.

Suitable for surface and continuous row mounting.

Housing & Finishing

Die-formed pre-painted cold rolled steel finished in high-gloss white.

Electrical

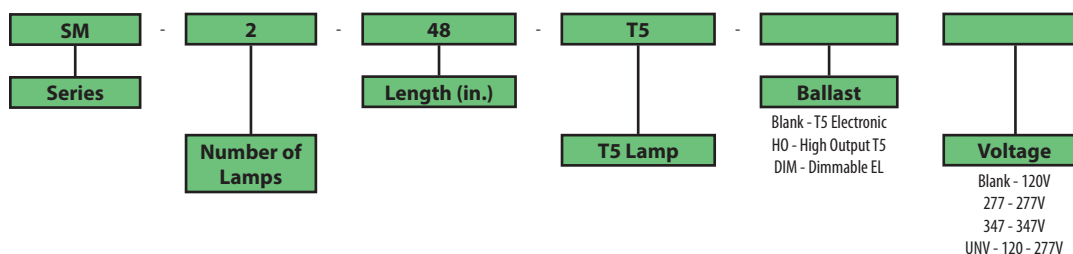
Available in electronic ballasts only.

Available voltages: 120V/277V/347V and UNV.

Approval

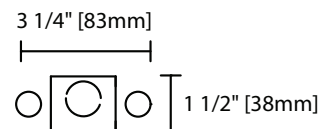
CSA and UL certified.

Ordering Information

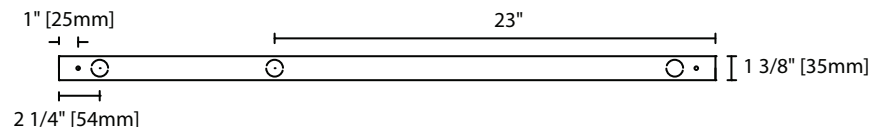


Product Availability

Item	Dimensions (L x W x D)	Lamps/ Cross Section	Lamps/ Fixture	Lamp Watt T5	Lamp Watt T5HO
SM 224-T5	22" x 1 3/8" x 1 1/2"	2	2	14	24
SM 236-T5	34" x 1 3/8" x 1 1/2"	2	2	21	39
SM 248-T5	46" x 1 3/8" x 1 1/2"	2	2	28	54
SM 260-T5	58" x 1 3/8" x 1 1/2"	2	2	35	80



SM2 T5 Cross Section View



SM2 T5 Base View