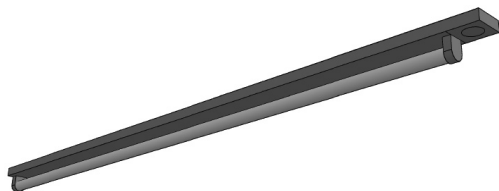


ST RM T5 - STRIP REMOTE BALLAST T5

Project		
Catalog #		
Volts		Lamp(s)
Ballast Type		
Type		Date
Approved by		



General

Low profile strip fixtures operated by remote ballasts are ideal for applications requiring lighting in very shallow spaces such as display cabinets and show cases.

Housing & Finishing

The strip and the ballast housing are made of die-formed pre-painted cold rolled steel finished in high-gloss white.

The body has a knockout beyond the socket to enable connecting it to the remote ballast.

Electrical

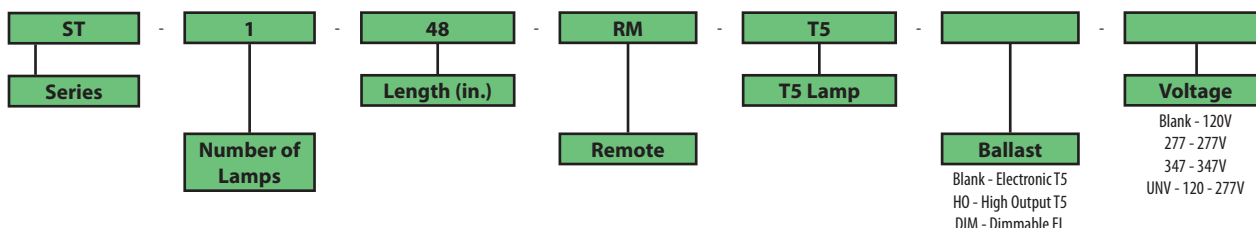
Available in electronic ballasts only.

Available voltages: 120V/277V/347V and UNV.

Approval

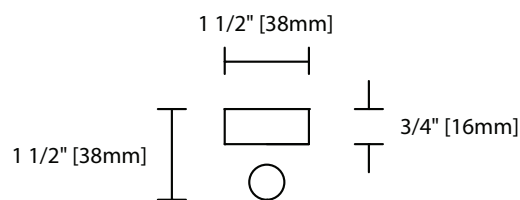
CSA and UL certified.

Ordering Information

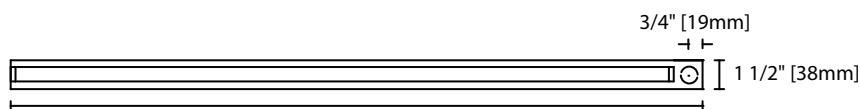


Product Availability

Item	Dimensions (L x W x D)	Lamps/ Cross Section	Lamps/ Fixture	Lamp Watt	
				T5	T5HO
ST 109-T5-RM	10 1/4" x 1 1/2" x 3/4"	1	1	6	
ST 112-T5-RM	13 1/4" x 1 1/2" x 3/4"	1	1	8	
ST 124-T5-RM	23 1/4" x 1 1/2" x 3/4"	1	1	14	24
ST 136-T5-RM	35 1/4" x 1 1/2" x 3/4"	1	1	21	39
ST 148-T5-RM	47 1/4" x 1 1/2" x 3/4"	1	1	28	54
ST 160-T5-RM	59 1/4" x 1 1/2" x 3/4"	1	1	35	80



ST RM T5 Cross Section View



ST RM T5 Base View